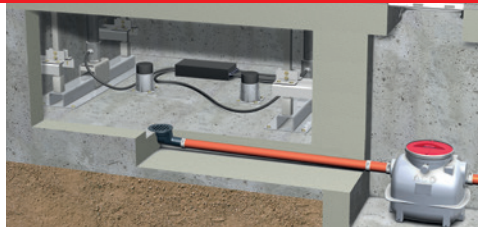




© Industrieblick – Fotolia.com



*For indoor or below ground installation*

**ACO Light Oil Separators Coalisator-P**

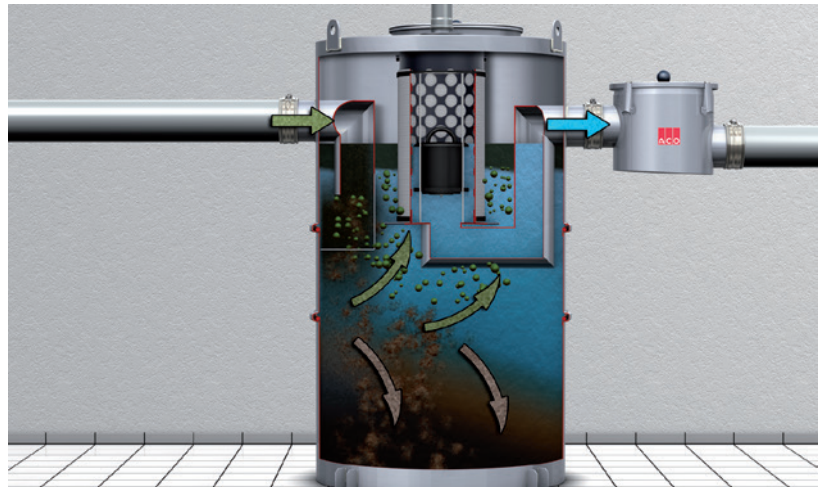


**Light Oil Separators – Application**

If mineral oils or light oils, especially those that are flammable or can develop an explosive atmosphere in the drainage system, separator systems for light oil must be used behind the drainage points.

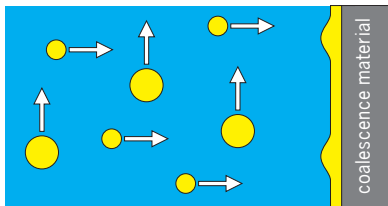
**The application scope**

e.g. gas stations, parking areas, parking lots, roadways, washing areas, car wash facilities, brush/portal washing systems, engine cleaning, workshops, vehicle recovery, scrap yards, transfer stations, tank pits, transformer stations

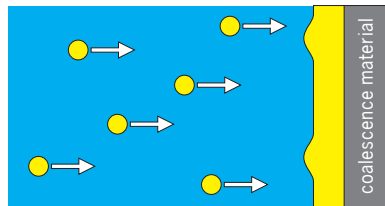


Gravity separation: light liquid collects on the surface, sediments (sludge) fall to the bottom.

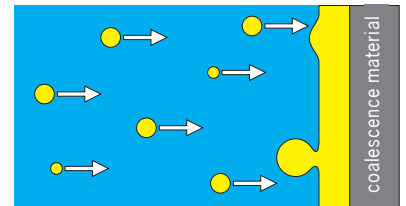
**Coalisator-P – Function**



The small oil droplets that are not separated due to their density difference to water meet the oil-friendly coalescence element and bond.



The oil drop spread over the coalescence material, and additional oil droplets are adsorbed and the oil film continues to grow.

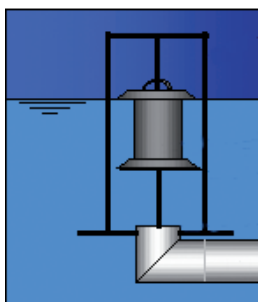


The adhesion of the oil film is exceeded. A large drop of oil begins to separate, floats upward and can therefore be separated.

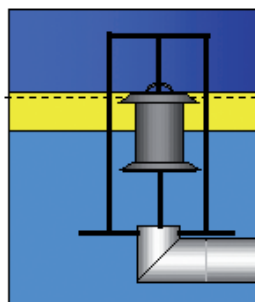
**Principle of automatic completion**

Excerpt from EN 858-2, Item 5.2  
"Separators must be fitted with automatic closing devices that ensure that no isolated light oils can reach the drain of the separator."

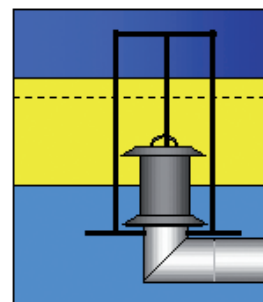
Operating condition without Light Liquid



Operating condition with accumulating Light Liquid



Maximum Light Liquid accumulation closes outlet via float switch



Coalisator-P – System overview



Both the separators and sludge traps feature an inspection cover with OD Ø 450 mm.

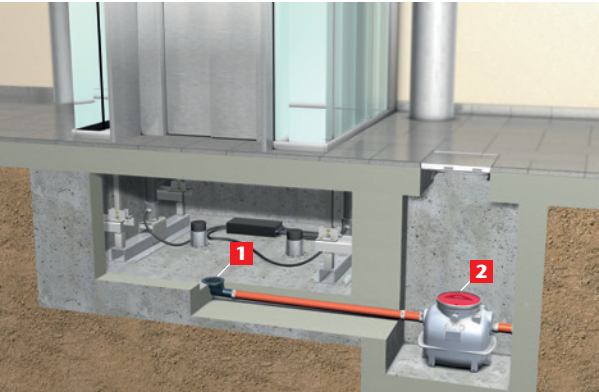
Optionally, an alarm device can be installed by using one of the available attachment sets (see section “accessories” for more information).

The raising tubes for the below ground installed separators can be shortened on-site according to local demands. The cover is suitable for load class B applications according to EN 124.

All light liquid separators comply with the European Standard (EN) 858, Class I.

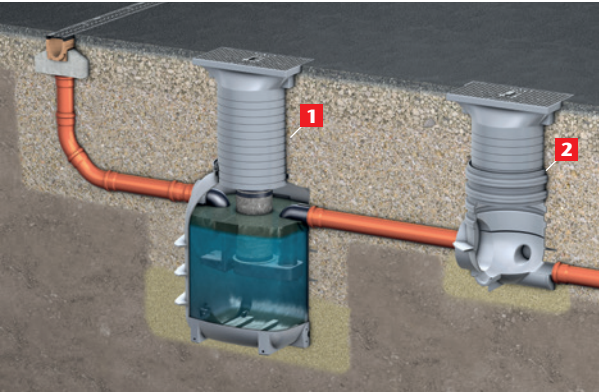
For enhanced disposal comfort each separator can be equipped with a direct suction line on-site (please see section „accessories“ for more information).

Application: elevators



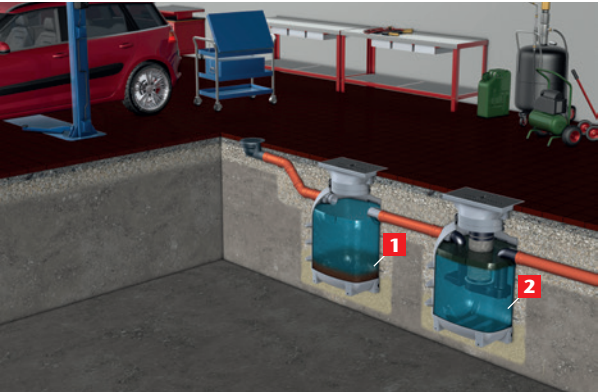
(1) Floor gully  
(2) Coalisator-P light oil separator

Application: washing areas



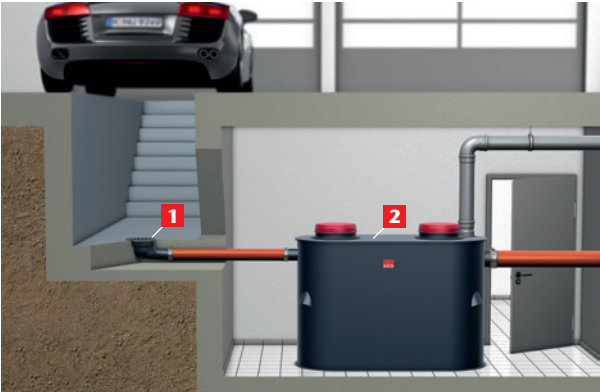
(1) Coalisator-P light oil separator  
(2) Sampling shaft

Application: garages



(1) Sludge trap  
(2) Coalisator-P light oil separator

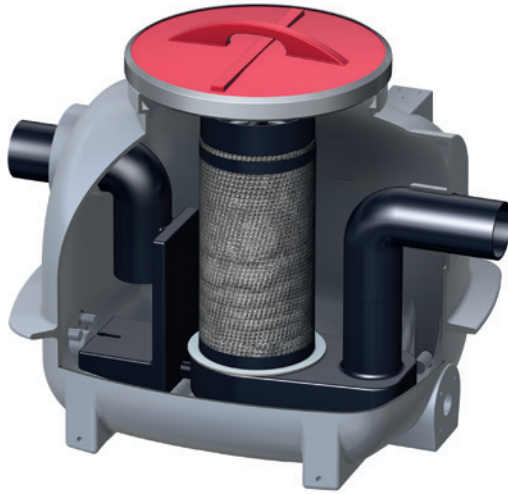
Application: parking decks



(1) Floor gully of cast iron  
(2) Coalisator-P NS 6 for free standing installation

**Coalisator-P – for free standing installation**

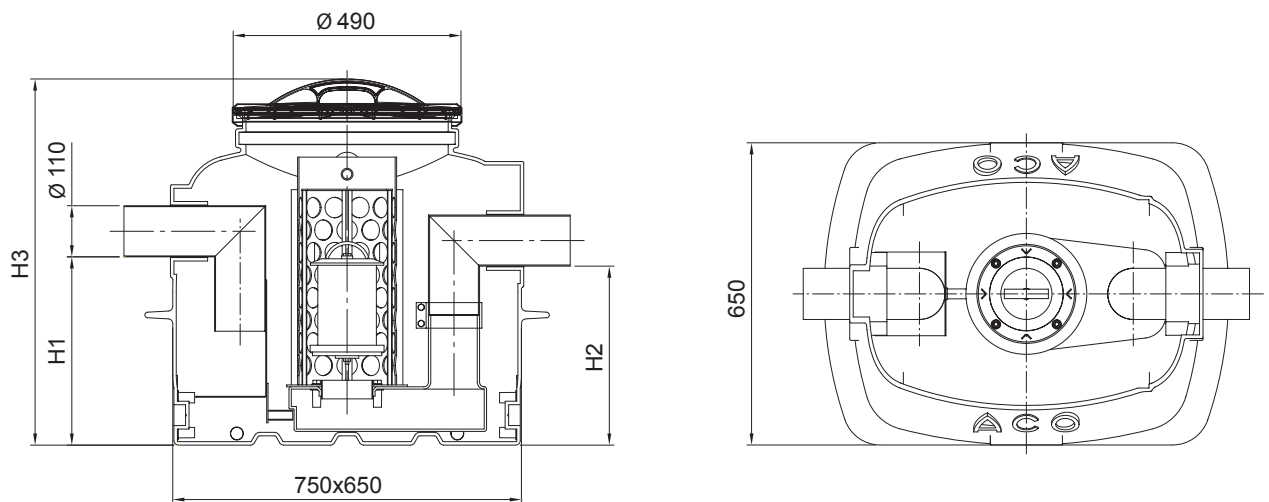
**NS 1,5 – NS 3**



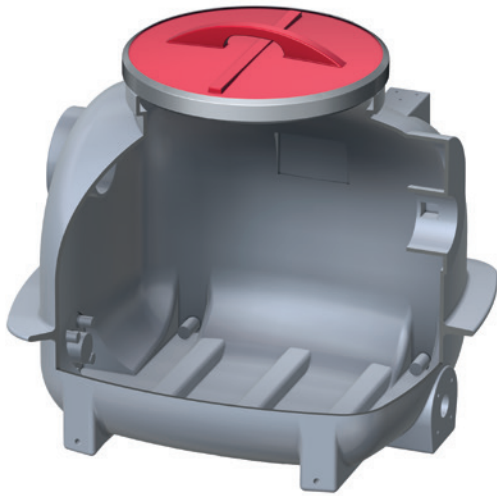
- Light oil separator according to DIN EN 858, Class I, for free standing installation in frost free rooms
- manufactured of polyethylene in oval design
- Separator with float switch of plastic, tared for light liquids with density until 0.90 g/cm<sup>3</sup>
- with supporting cage and coalescence insert
- all parts removable, inlet and outlet fittings of polyethylene
- with plastic cover Ø 450 mm with clamping ring
- Inlet and outlet with OD Ø 110 mm for respective pipe connection

NS	Sludge trap capacity [l]	Total capacity [l]	Oil storage capacity [l]	H1 [mm]	H2 [mm]	H3 [mm]	Item number
1,5	–	150	49	405	385	790	<b>3901.00.10</b>
1,5	150	300	49	765	745	1150	<b>3911.00.10</b>
3	–	150	49	405	385	790	<b>3903.00.10</b>
3	150	300	49	765	745	1150	<b>3913.00.10</b>

**Technical Dimensional Drawing**



Sludge traps – for free standing installation

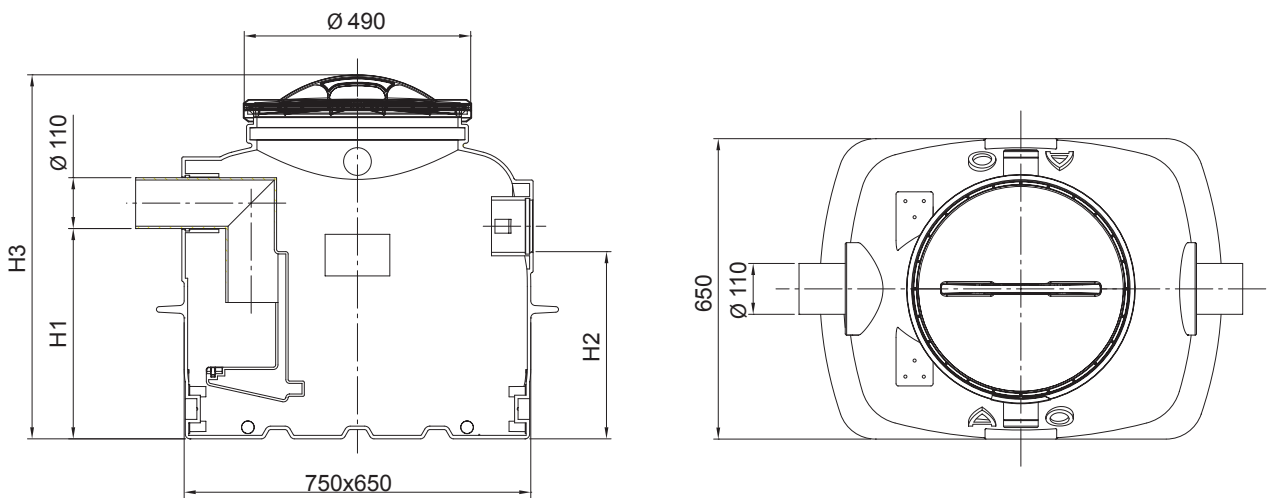


ACO Sludge trap

- Sludge trap for free standing installation in frost free rooms
- manufactured of polyethylene in oval design
- with inlet fitting of polyethylene for turbulence reduction
- with plastic cover Ø 450 mm with clamping ring
- Inlet and outlet with OD Ø 110 mm for respective pipe connection

Typ	Sludge trape capacity [l]	H1 [mm]	H2 [mm]	H3 [mm]	Item number
150	150	455	405	790	3900.00.20
300	300	815	765	1150	3900.00.21

Technical Dimensional Drawing



**Coalisator-P – for below ground installation**

**NS 1,5 – NS 3**

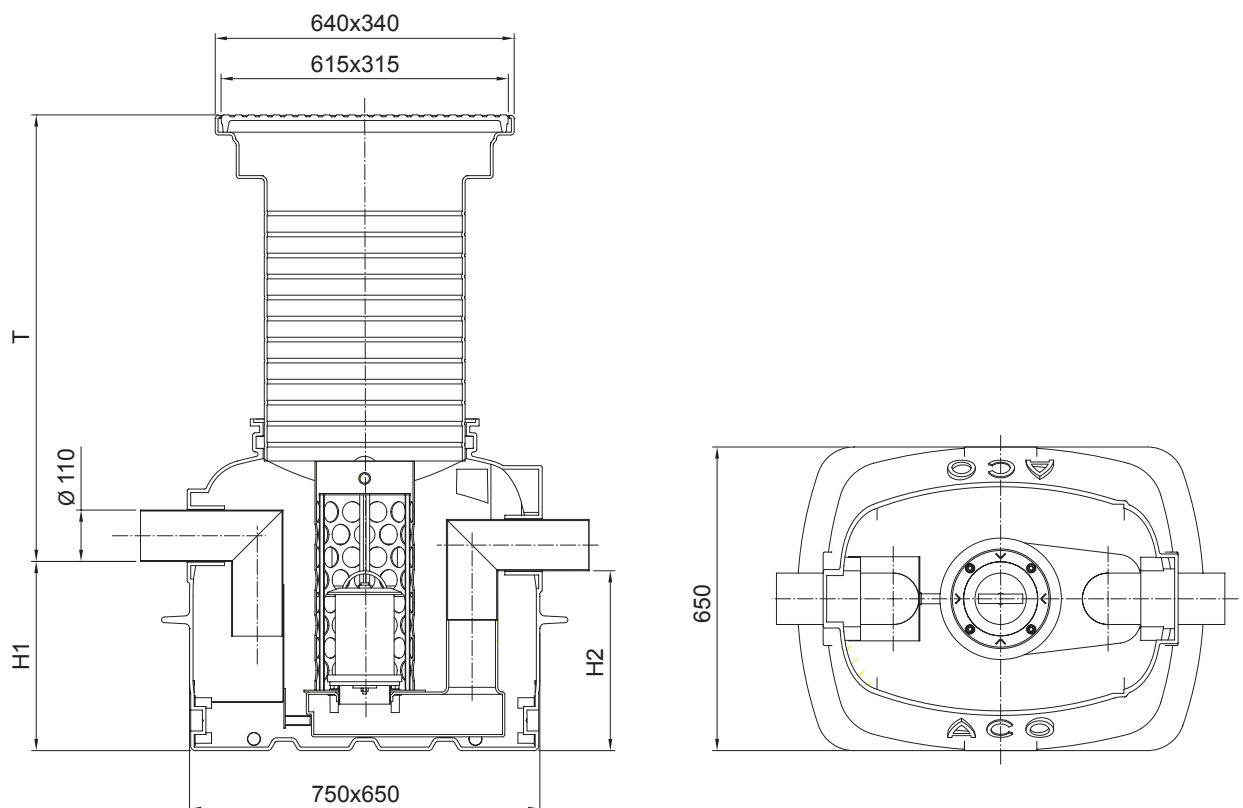


**ACO Coalisator-P NS 1,5**

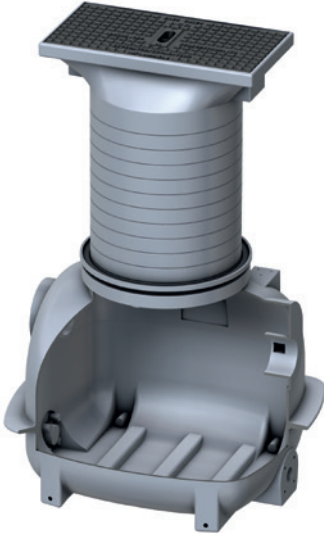
- Light oil separator according to DIN EN 858, Class I, for below ground installation
- manufactured of polyethylene in oval design
- Separator with float switch of plastic
- tared for light liquids with density until 0.90 g/cm<sup>3</sup>
- with supporting cage and coalescence insert
- all parts removable, inlet and outlet fittings of polyethylene
- with height adjustable raising tube and cover of cast iron for load class B application according to EN 124, raising tube can be cut every 45 mm
- cover dimensions: 615 mm x 315 mm
- Inlet and outlet with OD Ø 110 mm for respective pipe connection

NS	Sludge trap capacity [l]	Total capacity [l]	Oil storage capacity [l]	H1 [mm]	H2 [mm]	T [mm]	Item number
1,5	–	150	49	405	385	510 – 965	<b>3901.30.10</b>
1,5	150	300	49	765	745	510 – 965	<b>3911.30.10</b>
3	–	150	49	405	385	510 – 965	<b>3903.30.10</b>
3	150	300	49	765	745	510 – 965	<b>3913.30.10</b>

**Technical Dimensional Drawing**



Sludge traps – for below ground installation

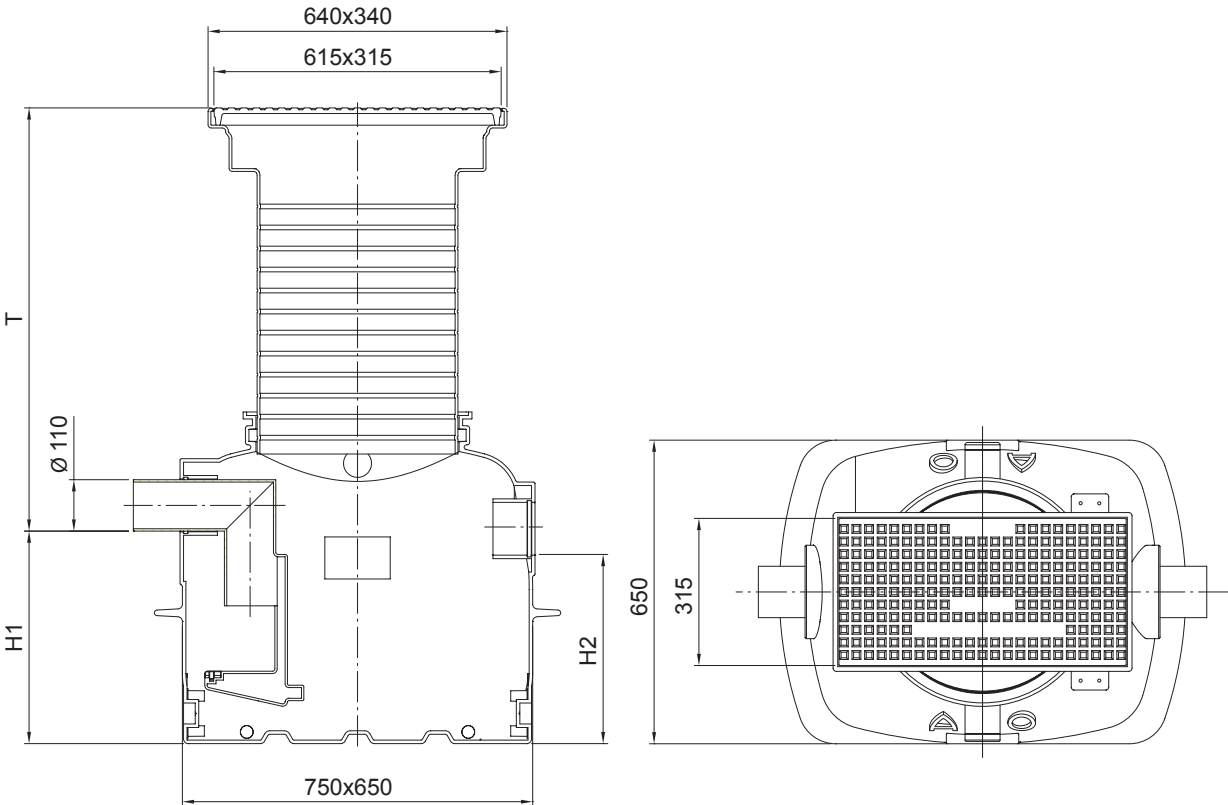


Sludge trap for below ground installation

- manufactured of polyethylene in oval design
- With height adjustable raising tube and cover of cast iron for load class B application according to EN 124, raising tube can be cut every 45 mm
- with inlet fitting of polyethylene for turbulence reduction
- cover dimensions: 615 mm x 315 mm
- Inlet and outlet with OD Ø 110 mm for respective pipe connection

Type	Sludge trap capacity [l]	H1 [mm]	H2 [mm]	T [mm]	Item number
150	150	455	405	460 – 915	3900.10.20
300	300	815	765	460 – 915	3900.10.21

Technical Dimensional Drawing



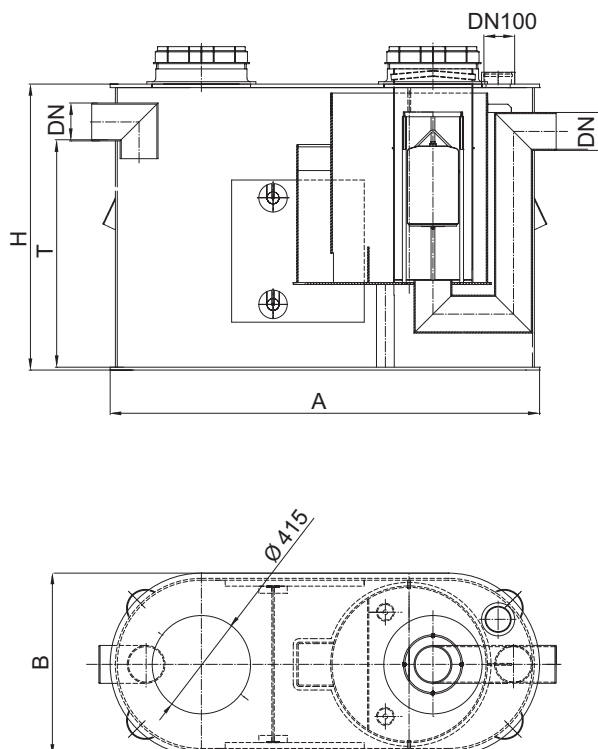
**Coalisator-P NS 6 – for free standing installation**



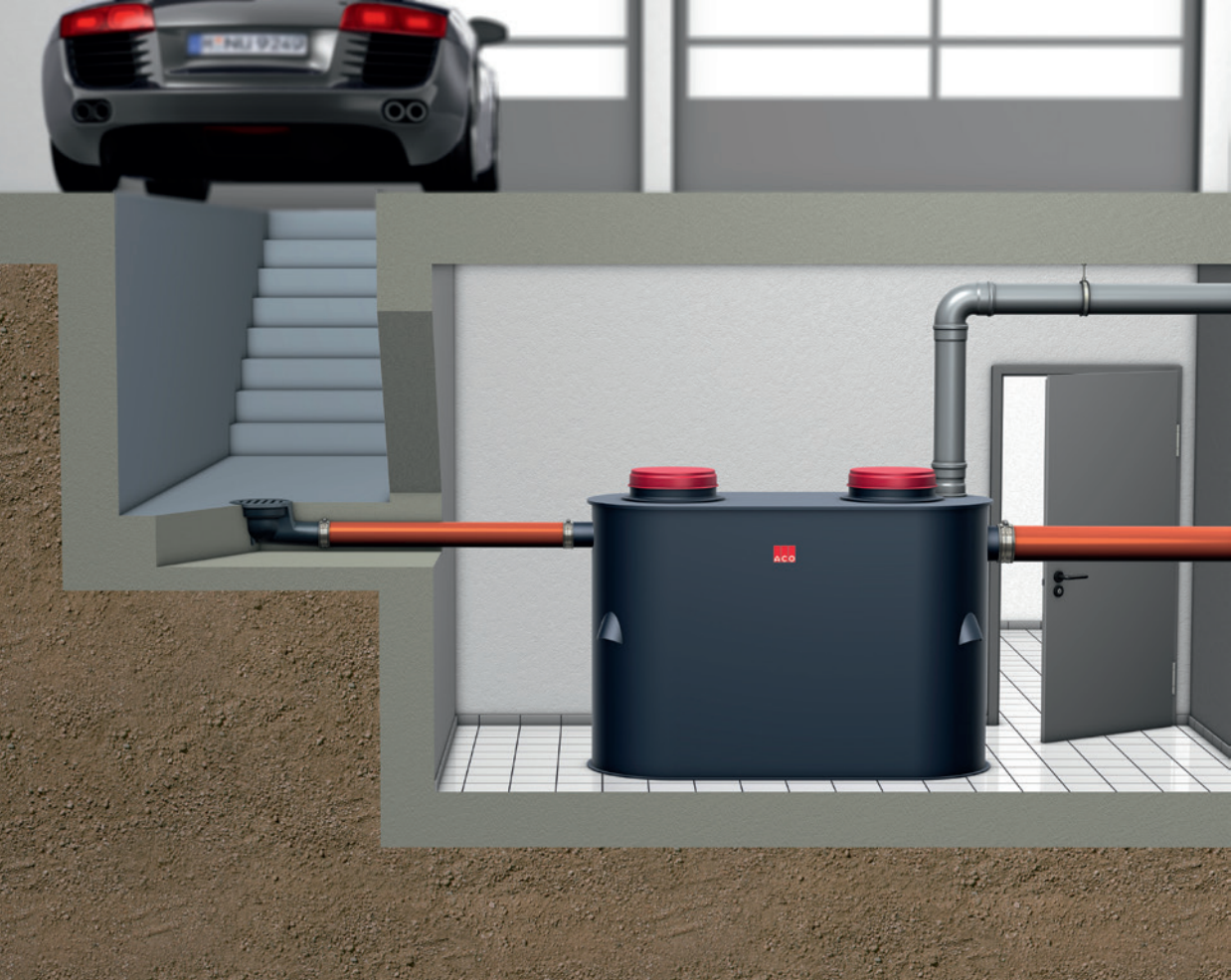
- Light oil separator according to DIN EN 858, Class I, for free standing installation in frost free rooms
- manufactured of welded polyethylene in oval design
- Separator with float switch of plastic, tared for light liquids with density until 0.90 g/cm<sup>3</sup>
- with supporting cage and coalescence insert
- all parts removable, inlet and outlet fittings of polyethylene
- with screw-on plastic covers Ø 315 mm
- Inlet and outlet with for respective pipe connection
- With ventilation connection DN 100

NS	Sludge trap capacity [l]	Total capacity [l]	Oil storage capacity [l]	A [mm]	B [mm]	H [mm]	T [mm]	Item number
6	600	647	129	1813	770	1207	967	<b>405478</b>
6	1200	1466	129	2160	770	1327	1087	<b>405060</b>

**Technical Dimensional Drawing**







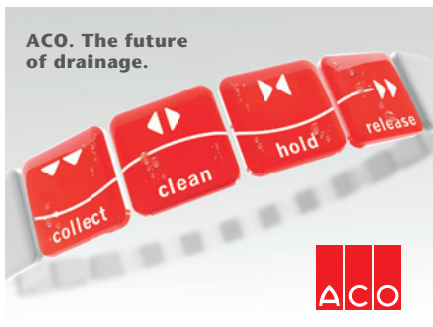
Coalisator-P NS 6 for free standing installation



Accessories

	Product Description	Type	Item number
	<p><b>Alarm signal device</b> For light liquid separators, enables combined or separate control of different fill levels</p> <p>Electric connection: 230 V/50-60 Hz, IP 67, cable length: 5 metres</p>	<p>Oil and flooding control Oil level control Flooding control</p> <p>Cable extensions: For one sensor, 1m For two sensors, 1m</p>	<p><b>6751.65.11</b> <b>6751.65.12</b> <b>6751.65.13</b></p> <p><b>6752.00.02</b> <b>6752.00.01</b></p>
	<p><b>Attachment set</b> For alarm signal sensors (designed for one or two sensor)</p>	<p>For below ground installation For indoor installation</p>	<p><b>3900.00.30</b> <b>3900.00.33</b></p>
	<p><b>Adapter set</b> For on-site installation of suction line DN 50 including Storz-B coupling and blind cover</p>		<p><b>3900.00.32</b></p>
	<p><b>Shut-off valve DN 100</b> For inlet piping, suitable for separators for free standing installation only</p>		<p><b>0175.31.87</b></p>
	<p><b>Filling device</b> With shut-off valve, suitable for versions with suction line and for free standing installation only</p>		<p><b>0153.06.76</b></p>
	<p><b>Connecting box</b> From stainless steel, material grade 304, for disposal coupling of suction line, for wall mounting</p> <p>Dimensions (width x height x depth): 370 mm x 330 mm x 250 mm</p>		<p><b>7601.80.22</b></p>

	<b>Product Description</b>	<b>Type</b>	<b>Item number</b>
	<b>Plaster frame</b> For connecting box		<b>7601.80.23</b>
	<b>Street cap</b> For suction line		<b>5354.00.00</b>
	<b>Sampling unit</b> For light oil separators for free standing installation,  from polyethylene, inspection opening Ø ca. 450 mm, inlet and outlet OD Ø 110 mm		<b>3300.09.11</b>
	<b>Sampling shaft</b> For light oil separators for below ground installation,  from polyethylene, inspection opening ca. 600 mm x 300 mm, for load class B 125, inlet and outlet connection OD Ø 110 mm  For inlet invert 530–985 mm (gradient 153 mm) For inlet invert 660–1115 mm (gradient 33 mm)	Gradient: 153 mm Gradient: 33 mm	<b>3301.13.10</b> <b>3301.13.11</b>
	<b>Extension element with clamping flange</b> For sampling shaft, building height: 100–650 mm (can be cut every 45 mm)		<b>3300.13.00</b>



**ACO Passavant GmbH**

Im Gewerbepark 11c  
36457 Stadtlengsfeld  
Germany  
Tel. +49 (0)36965 819-0  
Fax +49 (0)36965 819-361  
[www.aco-haustechnik.de](http://www.aco-haustechnik.de)